

Hybrid STUDYTOURS

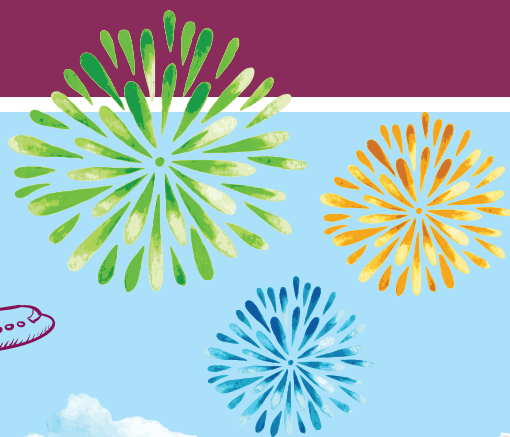


Access Australia's largest schools network through our hybrid learning model.

We offer tailor-made programs to suit the needs of each group.

Why choose NSW Government Schools Hybrid Study Tours?

- With over 2200 schools, we offer Australia's largest number of host schools
- Flexible schedules
- Connections with local students
- Access to school activities and programs
- Programs designed to fulfil each group's specific needs



TAILOR-MADE OPTIONS

Choose from the options below



Pre-tour Virtual

Duration: 45 minutes to half day (2 x 45 minutes). Multiple sessions upon request.

- Prepare for the in-person tour
- Closed-class English, cultural or specialised lessons to support in-person tours
- Virtual live school tour (with local students and/or robot*)
- Environmental Education Centre virtual programs
- Meet local students to practise English (note: virtual buddy may differ from in-person buddy)
- Pre-departure orientation

*Robot subject to availability

In-person Tour - Experience NSW!

Duration: 3 days to 10 weeks

- Orientation, school tour and welcome ceremony (catering optional)
- Closed-class English, cultural or specialised lessons conducted by a qualified teacher
- Participation in classes/project work with local students and/or buddies
- Environmental Education Centre hands-on programs
- Excursions to zoos, wildlife parks, beaches and other famous tourist sites in NSW
- Options for themed programs e.g. sustainability (SDGs), leadership
- Group presentations on project work (where applicable)
- Farewell ceremony (catering optional)

Post-tour Virtual

Duration: 45 minutes to half day (2 x 45 minutes). Multiple sessions upon request

- Reflect on the in-person tour
- Discuss future actions and goals
- Group/individual presentations
- Option to reconnect with local students



GROUP SIZE

- Minimum group size is 10 students for in-person study tours and 5 students for virtual study tours.
- Large groups may be hosted by two or more schools.
- 1 English speaking adult is required per 15 students (and an additional 1 per 15 students in reserve for in-person tours).

AGE

- 10 to 18 years (separate primary and high school groups). Most suitable for junior and senior high school students.

ACCOMMODATION

Homestay for student groups can be arranged on request but is limited in availability. Other options include tour operator arranged hotels or dormitory facilities.

PRICE AND BOOKING CONDITIONS

- Registered tour operators should contact DE International for a price list and quote.
- 10% discount offered on the pre and post virtual sessions when booked as a hybrid tour.
- In-person study tour must occur within 3 months of pre or post tour and the minimum duration is 3 school days.

www.deinternational.nsw.edu.au

**FOR MORE
INFORMATION:**

PHONE

Tel (in Australia): 1300 300 229 (Option 3)
Tel (outside Australia): +61 2 9244 5555 (Option 3)

EMAIL

studytours@det.nsw.edu.au